



ONIRIS® Mandibular Advancement Device

SIMPLE AND EFFECTIVE TREATMENT FOR SNORING AND SLEEP APNEA

TADAWI
LIFE TECH

Your Life...Our Commitment

حياتكم..التزامنا

- Muscat, Oman
- +968-91235160, 79012020
- info@tadawilifetech.com
- Tadawilifetech.com





ONIRIS® MAD

ADVANTAGES AND INDICATIONS

FEATURES

- 2 sizes : Standard and Large
- Average lifetime : 12-24 months
- Bi-bloc : free mouth opening
- Custom made dental prints
- mm advancement : from 0 to 11 mm
- Can be reajusted



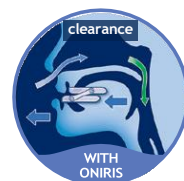
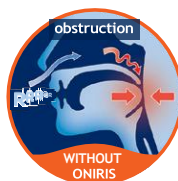
+ The advantages of ONIRIS PLUS

- Excellent compliance
- Splittable posterior extension for optimal coverage while reducing the occurrence of joint discomfort
- Strengthened connecting hooks for individuals with bruxism
- Increased titration capacity from -4 to 11mm (tailored for individuals with retrognathia)



HOW IT WORKS ?

The patented design of Oniris MAD allows the lower jaw to move forward by releasing the passage of air through the oropharynx and thus prevents the phenomenon of obstruction causing snoring or sleep apnea.



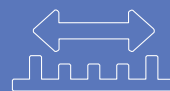
FREEDOM OF MOVEMENT

Its patented articulation and propulsion system provide complete freedom of movement enhancing long-term comfort and adherence to the treatment.



OPTIMAL COMFORT

The bi-material shape of the Oniris device ensures a customized adaptation to the patient's teeth and provides excellent comfort and stability. ^(1, 2)



CUSTOMIZED PRINTS

Precise adaptation to the patient's mouth thanks to a customized adjustment and impression.

(1) Marty, M., Lacaze, O., Arreto, C. D., Pierrisnard, L., Bour, F., Chéliout-Héraut, F. and Simonneau, G. (2017), Snoring and Obstructive Sleep Apnea: Objective Efficacy and Impact of a Chairside Fabricated Mandibular Advancement Device. *Journal of Prosthodontics*, 26: 381-386. doi:10.1111/jopr.12401.

(2) Pépin JL, Raymond N, Lacaze O, et al Heat-moulded versus custom-made mandibular advancement devices for obstructive sleep apnoea: a randomised non-inferiority trial *Thorax* 2019;74:667-674. doi:10.1136/thoraxjnl-2018-212726



IN WHICH CASES ONIRIS® MAD SHOULD BE USED?

1 FIRST LINE THERAPY

- Immediate treatment of snoring and sleep apnea suspicion awaiting for diagnostic examinations
- Snoring, mild to moderate sleep apnea
- For patients who are not eligible to reimbursement

2 SECOND LINE THERAPY

- In case of CPAP refusal or intolerance
- In substitution to CPAP, for short travels or second part of the night
- To determine whether mandibular advancement therapy is feasible and effective, **before** ordering a custom-made MAD for long-term use





ONIRIS® IS THE 1ST THERMOPLASTIC HEAT-MOULDED MAD NON-INFERIOR TO CUSTOM-MADE MAD

THE IRIS CLINICAL STUDY IS THE LARGEST RANDOMIZED CONTROLLED STUDY
IN THE FIELD OF MADs⁽²⁾

- More than **200 patients** refusing or not tolerating CPAP, mean AHI=26.6/h
- 1 year of follow-up in **7 different facilities**
- In Intention-To-Treat (ITT) and Per-Protocole (PP) analysis

OBJECTIVE :

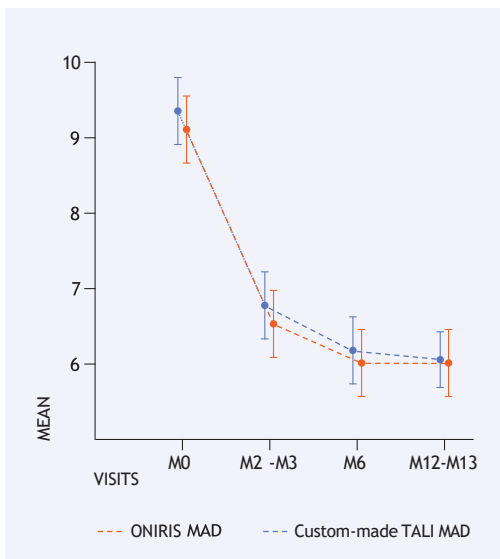
To determine whether ONIRIS thermoplastic heat-moulded titrable MAD is non-inferior to a custom-made MAD for Obstructive Sleep Apnea (OSA) in terms of effectiveness, compliance and tolerance.

RESULTS :

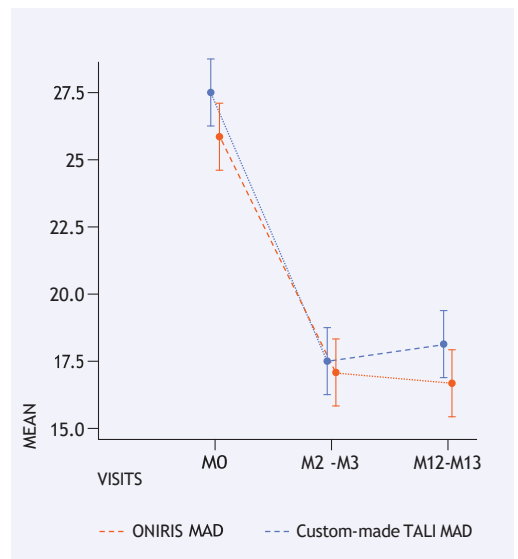
- The non-inferiority of Oniris MAD is confirmed regardless of the analyzed population (ITT or PP), gender, BMI or OSA severity.
- Good or excellent compliance for **89.7%** of patients at 2 months and for **93.1%** at 12 months.
- No significant dental or joint impact was observed in more than **96.6%** of patients after 1 year of treatment.
- Publication : The results of IRIS study were published in the scientific journal Thorax, along with an editorial, recommended « Editor Choice » in open access.



EPWORTH SLEEPINESS



AHI / HOUR



A COMPLETE PRODUCT RANGE AGAINST SNORING AND OSAS



	ONIRIS®	TALI®
Privileged indications	Not reimbursed patient AHI < 15	Reimbursed patient AHI > 15
Snoring	✓	✓
Sleep Apnea	✓	✓
Freedom of movement	✓	✓
Personalized mm advancement	✓	✓
Customized dental prints	✓	✓
Dentist fitting		✓
Validated by the French Health Authority		✓
Custom-made device		✓
Implementation time	24-48H	Depending on appointment delays (from several weeks to several months)
Average lifetime	12-24 months	5 years